



# GAT MONTHLY MEMBERSHIP PROGRESS REPORT

Results as of: 2/28/2023

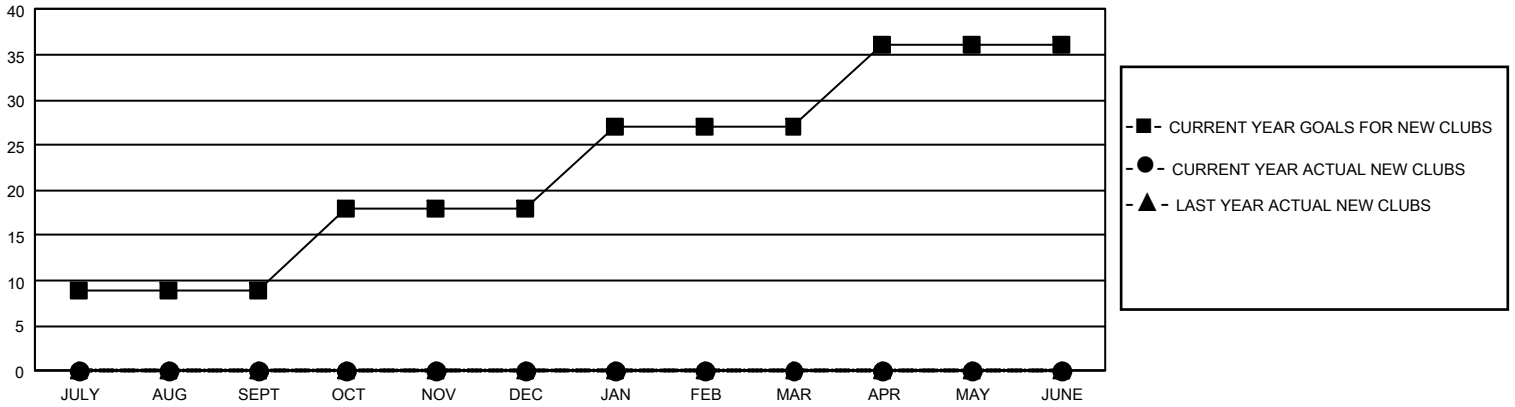
## GMT Constitutional Area 5 - C, Group C

REPORT DOES NOT INCLUDE CLUBS IN UNDISTRICTED AREAS.

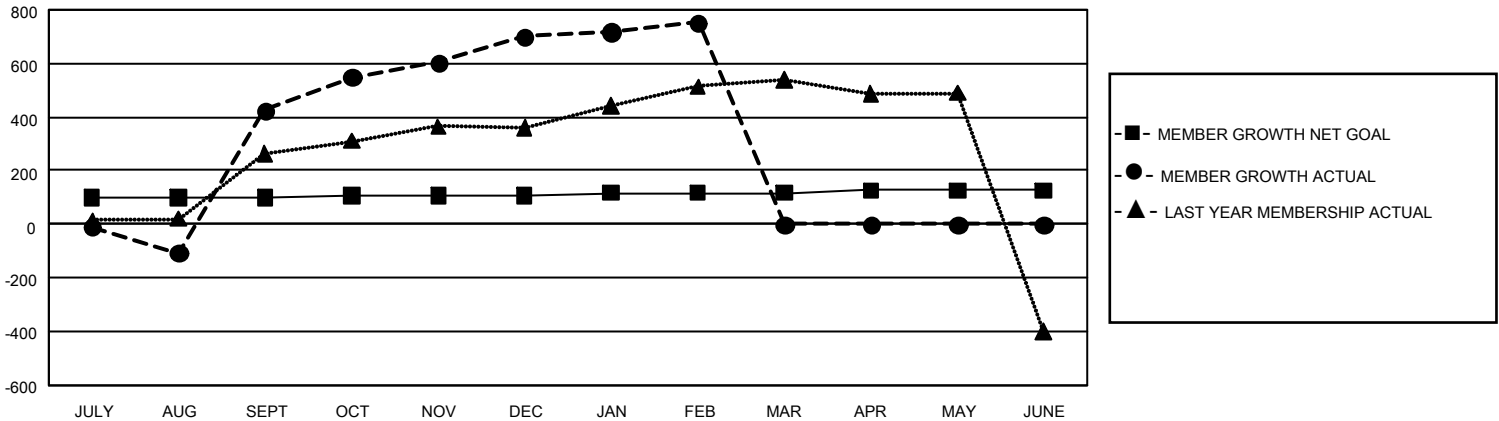
Clubs			
RESULTS FOR 2022-2023			
QUARTER	NEW CLUB GOAL	NEW CLUBS	DROPPED CLUBS
JULY/AUG/SEPT	27	0	8
OCT/NOV/DEC	27	0	0
JAN/FEB/MAR	27	0	0
APR/MAY/JUNE	27	0	0

Members			
RESULTS FOR 2022-2023			
QUARTER	MEMBER GROWTH NET GOAL	MEMBER GROWTH ACTUAL	DROPPED MEMBERS ACTUAL (including transfers)
JULY/AUG/SEPT	99	629	155
OCT/NOV/DEC	9	445	50
JAN/FEB/MAR	9	86	30
APR/MAY/JUNE	9	0	0

GOALS AND ACTUAL NEW CLUBS CUMULATIVE



GOALS AND ACTUAL MEMBERS CUMULATIVE



<b>DROPPED CLUBS: 8</b>	147 CLUBS OF 177 ADDED 1 OR MORE NEW MEMBERS	<b>GENDER DISTRIBUTION</b>	
		MALE 2,234 (55.53%) FEMALE 1,789 (44.47%) NON BINARY 0 (0.00%) PREFER NOT TO ANSWER 0 (0.00%)	
<b>DROPPED MEMBERS</b>		<a href="#">CLICK HERE FOR CUMULATIVE MEMBERSHIP DATA</a>	TOTAL FAMILY UNIT MEMBERS 370
DECEASED 0 CLUB CANCELLED 89 OTHER 147 <b>TOTAL 236</b>			FAMILY MEMBERS PAYING HALF DUES 190